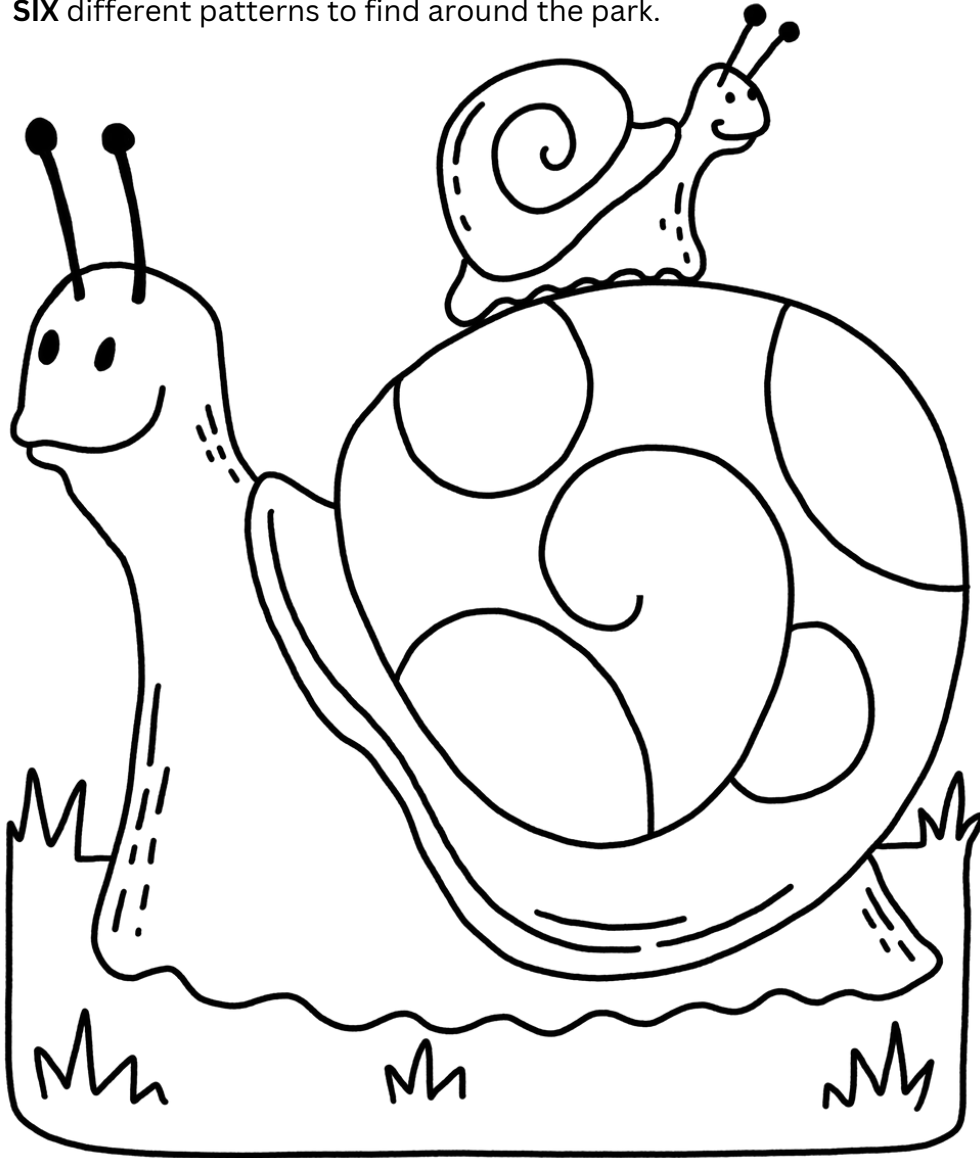


Texture Task

At each trail marker, you will find a plaque with a raised pattern to create rubbings and colour in the picture below.

Place your paper over the pattern and use the side of your crayon to create a colourful rubbing in each part of the picture. There are **SIX** different patterns to find around the park.



trail created by Whistlestop Arts
whistlestoparts.org/bournehall

The SEED HUNTERS of Bourne Hall Park



Head Gardener James Child has tasked his apprentice, Willow Copse, to find the wind-blown plant seeds in Bourne Hall Park.

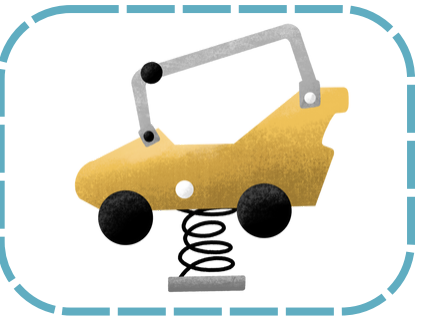
Help Willow complete this task - Explore the grounds to find the scattered seedpod puzzles.

The SEED HUNTERS Activity Trail

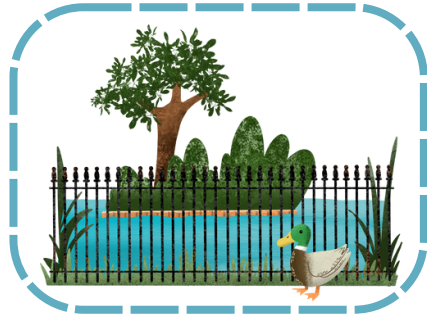
Seed hunters! Use the map and code key to **solve** the puzzles and **reveal** the names of the **seeds**. Visit each **trail marker** on the map, find the **plaque** and decode the symbols. Write the answers in the boxes provided. There is one space for each letter.

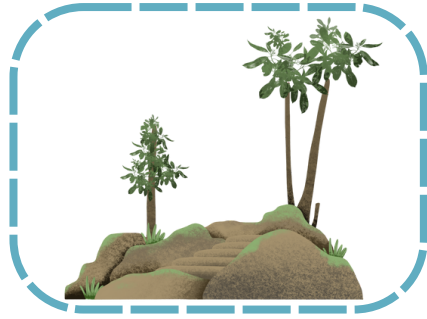
Visit the **Pause Stations** for more fun activities.













Code Key

A B C D E F G H I J K L M N O P Q R S T U V W X Y Z



- = Trail Markers
- = Pause Stations